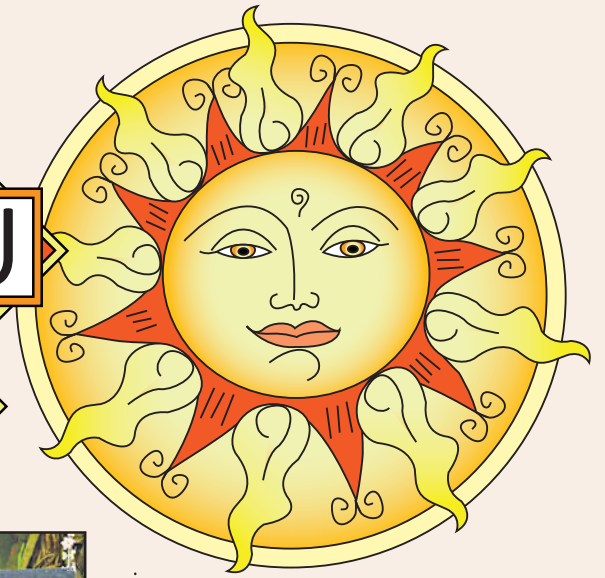


NEW YEAR GAMES

AVURUDU KREEDA



Breaking Pots Kana Mutti Bindeema

■ The major item in this game is a row of clay pots containing water that suspends at a certain height. One of the pots contains something different, for example, coloured water. And this is the 'winning' pot. The participants are blindfolded, spun around a few times, and then handed a bamboo pole.



Sack Race

■ This is a race in which the players hop inside a sack or *Goni* bag, with the objective of crossing the finish line before their opponents. Sack Races are fun and a challenging outdoor game that promotes balance and coordination.



Pancha Keliya

■ *Pancha* is a Sri Lankan traditional board game that is highly popular during the New Year season. It is an indoor game played in two groups, using five small sea shells, a coconut shell, and a game board. This game requires skill and precision to win.

Pillow Fight Kotta Pora

■ This is one of the most famous traditional New Year games authentic to Sri Lanka. This is a conventional pillow fight and it plays on a stout horizontal pole. During this game, the two players have to balance themselves on this horizontal bar while fighting.



Tug-of-War Kamba Adeema

■ This game involves two teams pulling on opposite ends of a rope, with the objective of pulling the rope over a designated line. Tug-of-War is a popular team sport that requires strength, coordination, and strategy.



Lime and Spoon Race

■ The lime and spoon race is one of the major sports in the Sinhala New Year. In this game, participants have to run with a spoon in their mouth while balancing a lime or lemon. The first person to reach the end without dropping the lime is the winner. This fun game is popular among both children and adults.



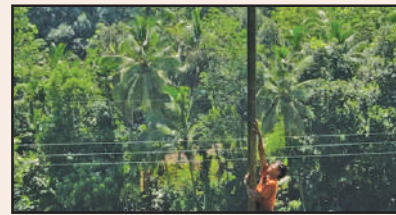
Placing the Eye on the Elephant Aliyata Asa Thabeema

■ This is one of the most popular traditional New Year games. First, a picture of an elephant is drawn on a blackboard without an eye. Then, each one is blindfolded and given chalk to spot the position of the eye of the elephant. The competitor who draws the eye in the most precise position wins this game.



Olinda Keliya

■ *Olinda Keliya* is another indoor New Year board game, normally played by two players seated on either side of the board. The board has nine holes, with four beads put in each. The beads are *Olinda* seeds that are abundant in villages.



Climbing the Greasy Pole Lissana Gaha Nageema

■ This is one of the most interesting New Year games. A long pole made from the trunk of an arecanut tree is stuck vertically into the ground. A thick coat of slimy grease is applied to the trunk of this tree. As the trophy, a flag is placed at the top. The contestants need to climb the tree and get the flag.

Source: Internet Graphic: Mahil Wijesinghe

Going on the swing Onchilla

■ Women and children ride the *Onchilla* – the swings – strung on trees. Sometimes there are two people seated on the swing while another person keeps swaying the swing back and fro while singing special verses known as *onchili waram*.



Eating Buns

■ One of the most interesting games in to Sinhala New Year is eating buns. In this activity, there are buns that suspend from a horizontal string. The contestants line up with their hands tied behind their backs. With the starting signal, they run and kneel in front of the dangling buns. The objective of the game is to finish eating the bun as quickly as possible.



New Year Princess Pageant Avurudu Kumari

■ This beauty contest involves dressing in traditional Sri Lankan attire, a *redda* and *hattaya* for girls. The judging panel makes their final decision based on complexion, figure, teeth, hair, and youthful appearance. Personality and talent are also taken into consideration.

